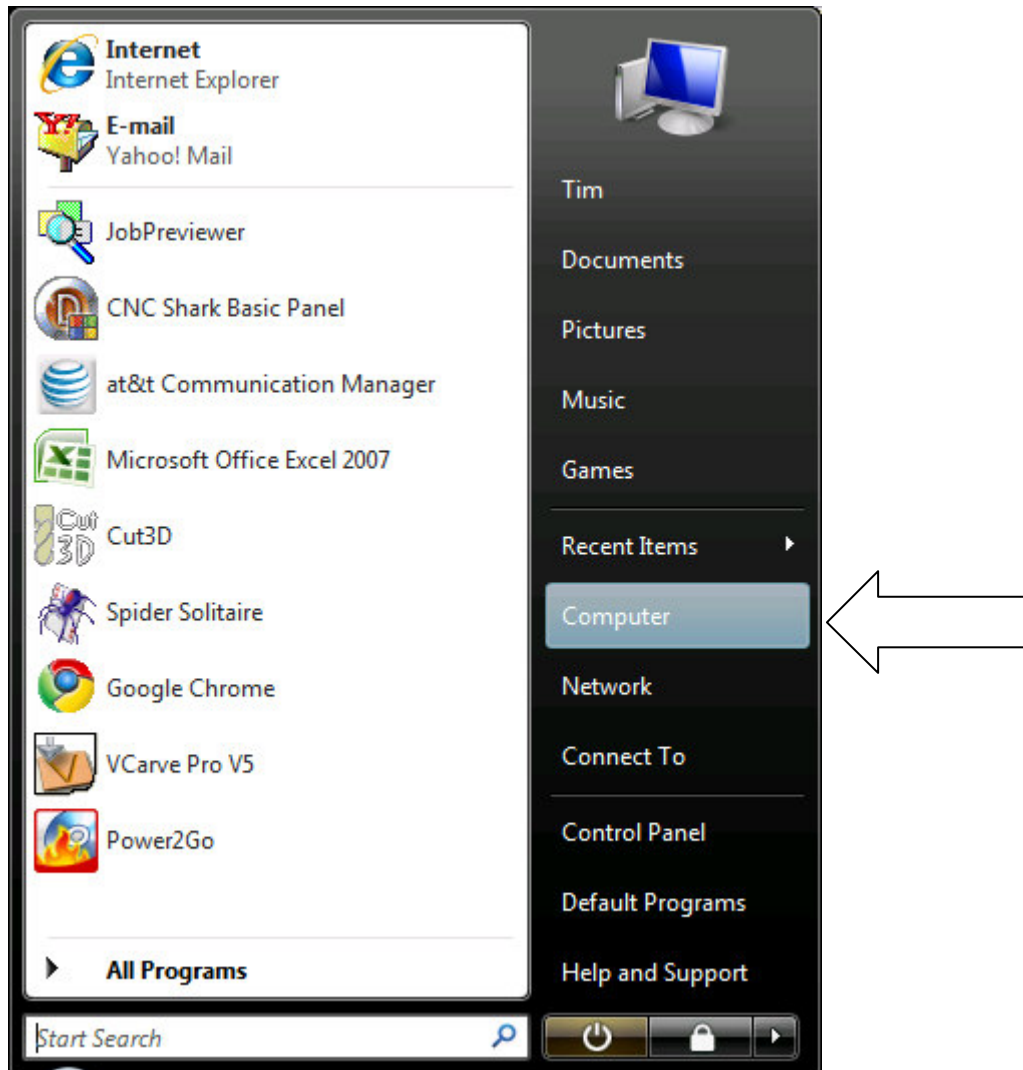
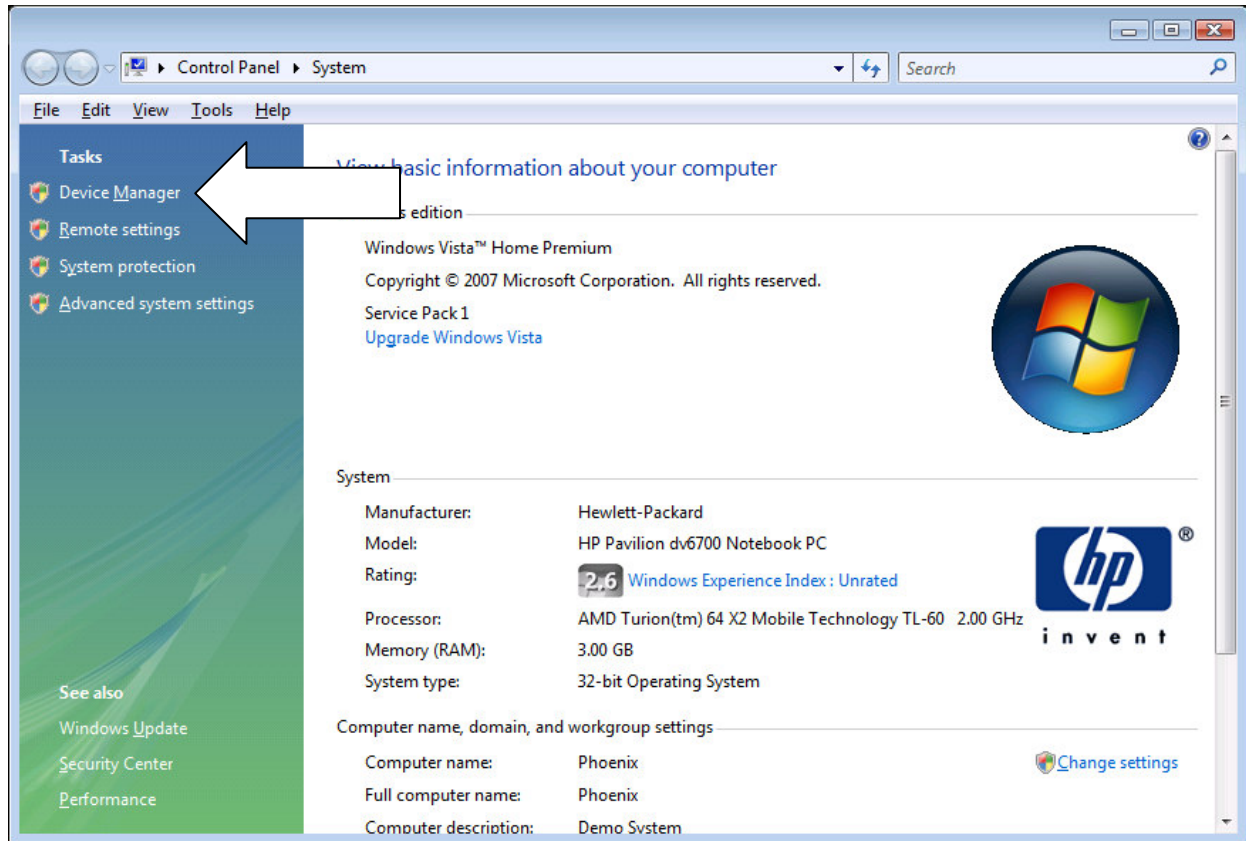


INSTALLING WINDOW 7 OR VISTA DRIVERS
FOR CNC SHARK (PRO)
32 and 64 BIT VERSIONS
(Only needed if drivers didn't install)



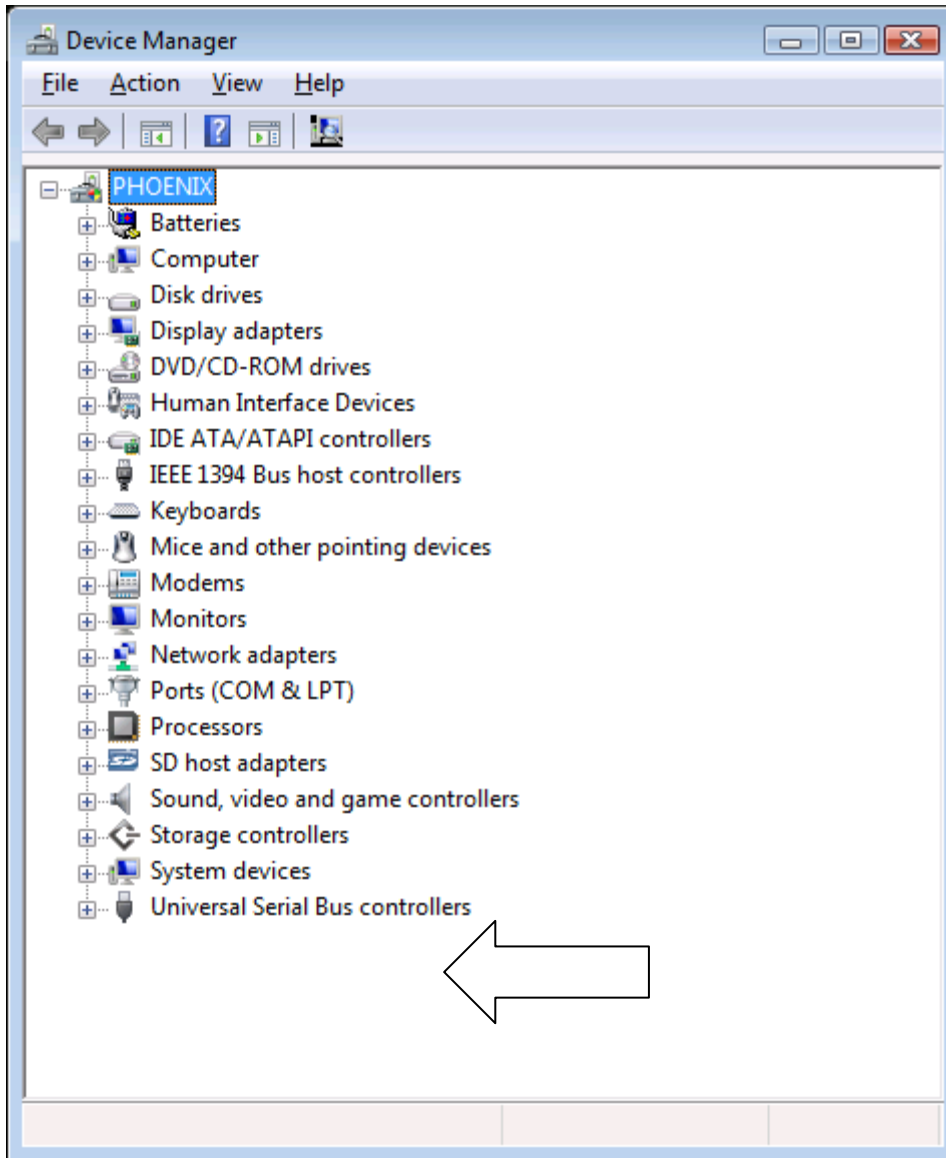
Easiest way is to have the CNC Shark USB controller plugged in to the Computer or laptop. If a screen pops up to install hardware close it before continuing.

Proceed to the start menu as shown above and **right** click on the Computer show above. This will create a drop down box and in that drop down click the properties.



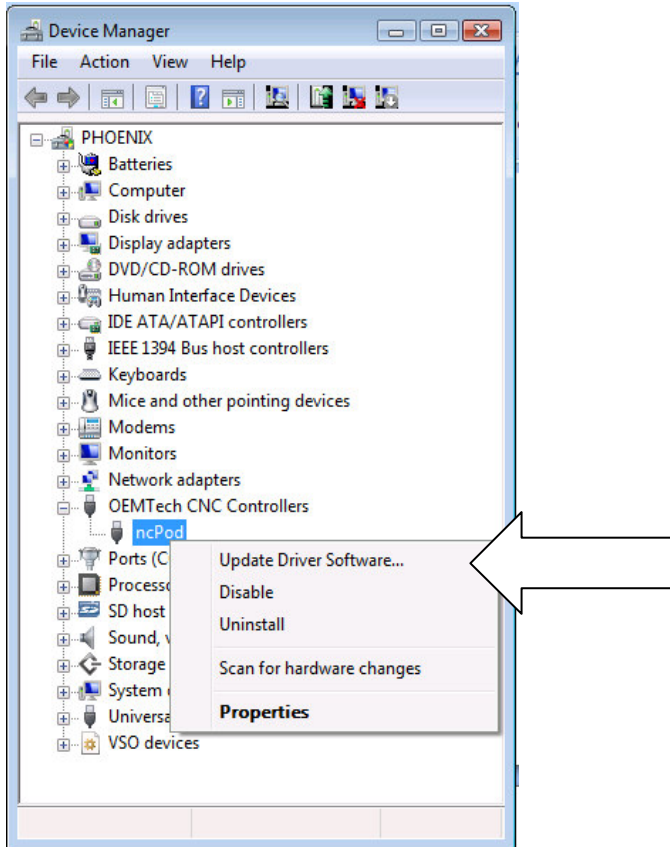
This will open the control panel to the system screen. Now click the device manager show above.

NOTE: This will prompt the user with a screen to see if they wish to continue click the continue button.



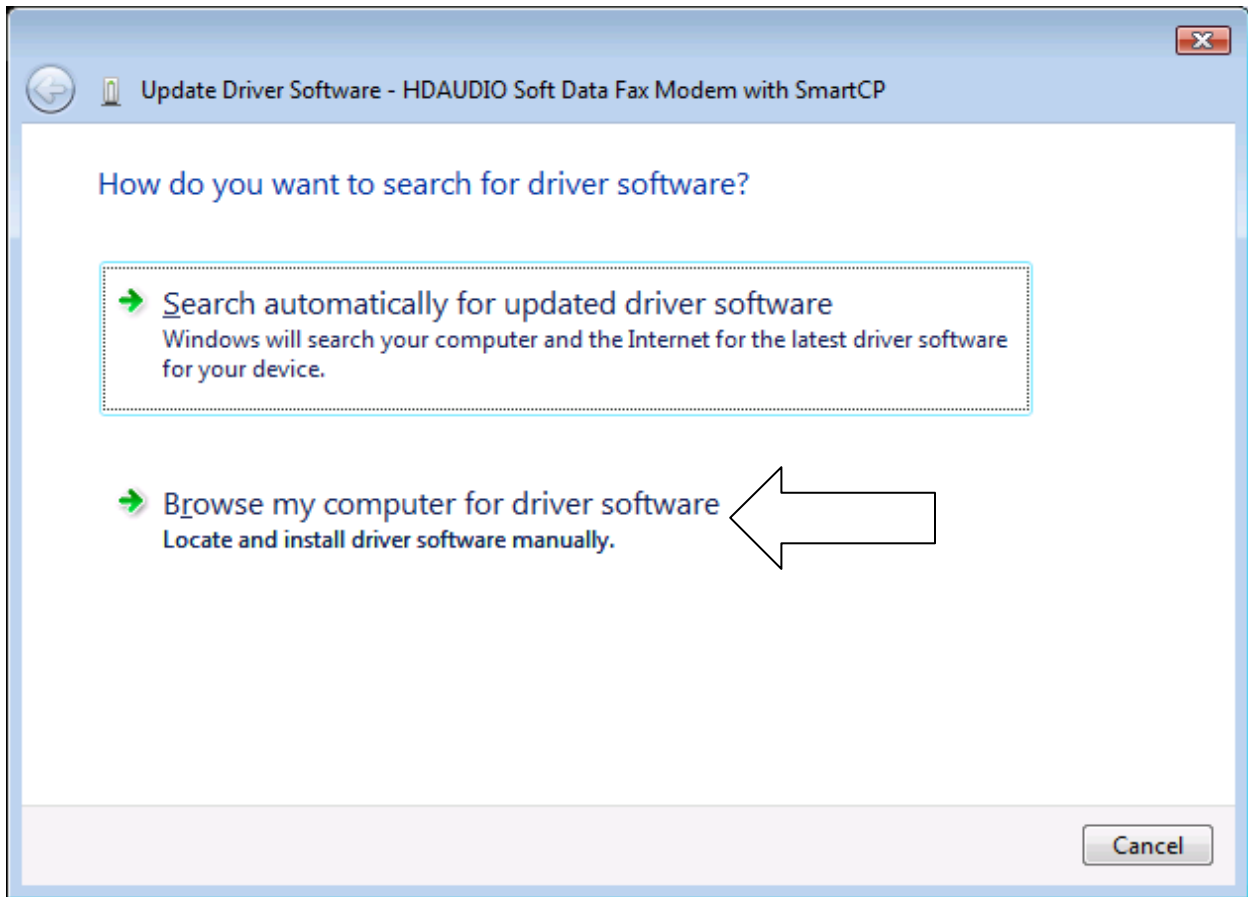
If the NCpod is not yet installed it will show up at the bottom of the list where the arrow is showing with a yellow question mark.

It might also show under the OEMTECH tab see next page.

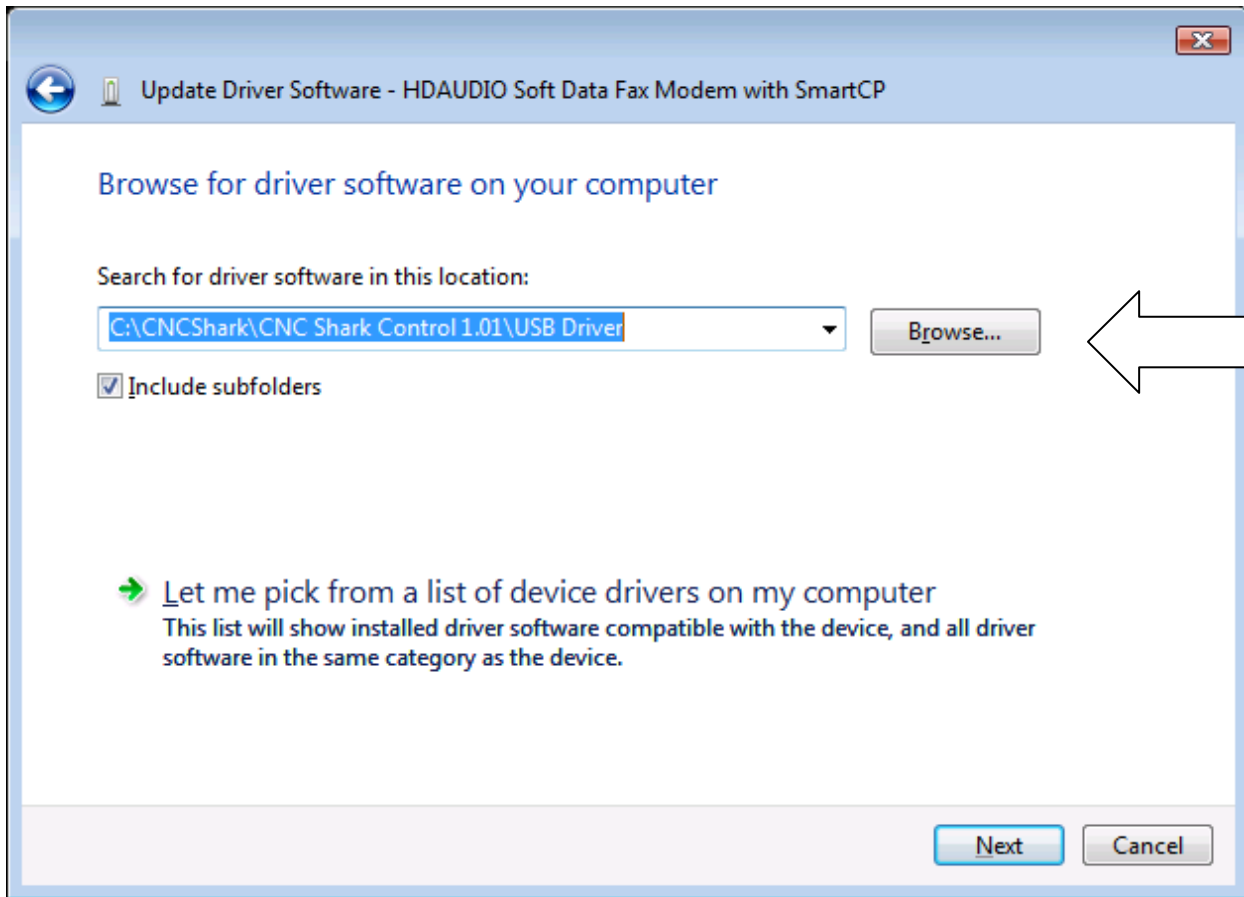


Above is a simulated screen, your screens will look slightly different

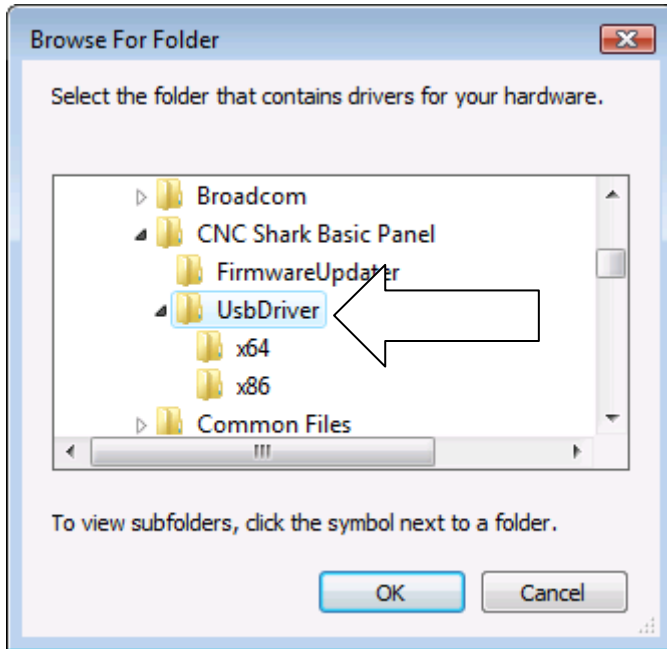
On your computer Click on the NCPOD and select the "Update driver software".



Click on the Browse my computer for driver software

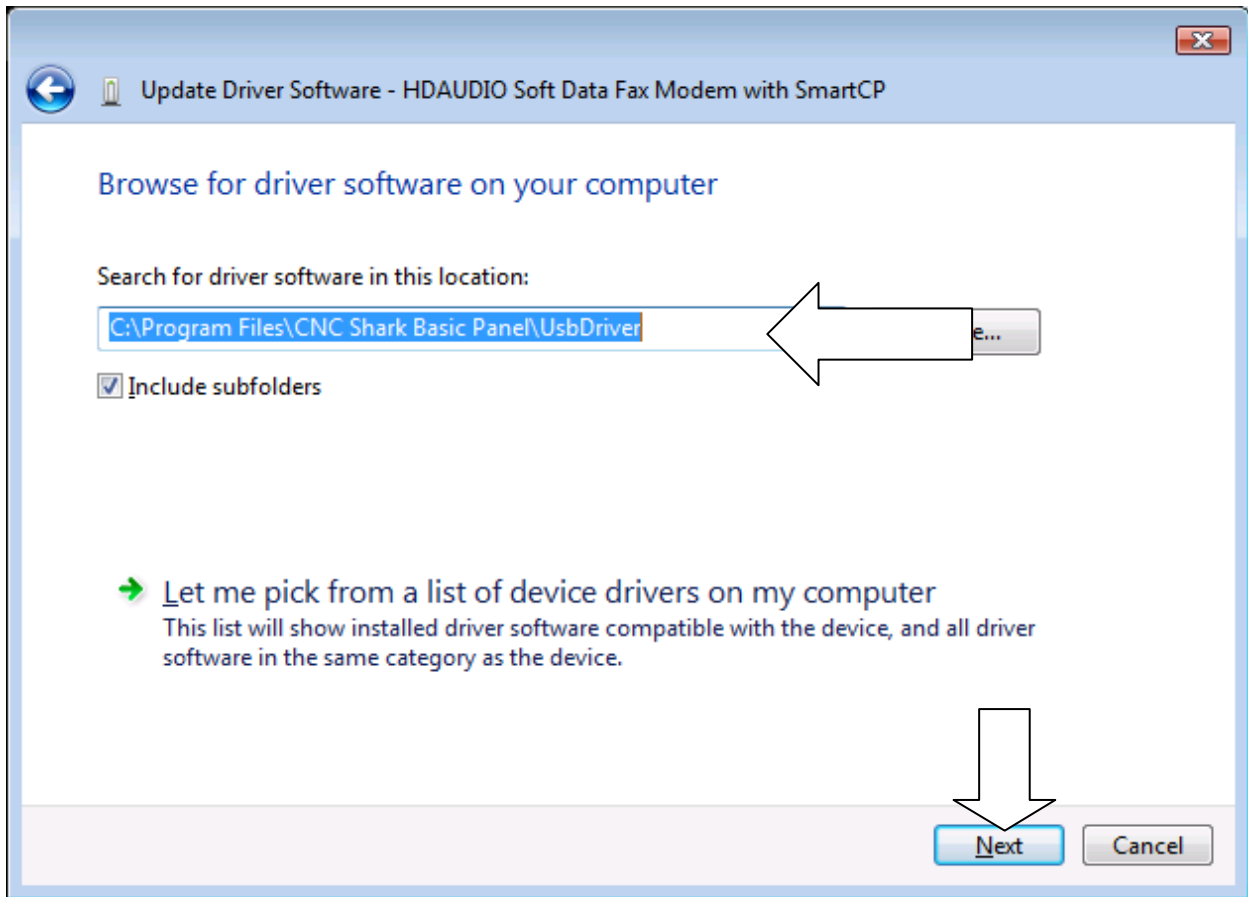


Regardless of what is in the software location click the Browse button to pick the correct location.



Navigate starting from **computer** area to the **local C: drive** down to the **program files** then the **CNC Shark basic panel** then the **USB Driver**. They have to click on it so it lights this is important or will not work.

NOTE: on vista 64 machines the CNC Shark control Panel is in the "Program Files x86" folder.



When you click ok it will put you back to this location and you will have the window setup as show above. The only difference is if they are on the 64 version and it would have C:\Program Files x86\ instead of the C:\Program Files\.

Click the next and it should say install driver software. When it finishes (takes about a min) then the CNC Shark control panel should work without a reboot The USB cable should be unplug and plug back in the USB controller just to be safe that is it reset with the new driver.