



## What's new in 1.5.0.22

1.5.0.22 contains some minor changes from 1.5.0.21 (released on 11/2/2011). The differences between the two versions are:

- There is no need to uninstall 1.5.0.21 prior to installing 1.5.0.22. Be sure that the Shark Control Panel is closed (not running), and install 1.5.0.22.
- Scan function licensing is now performed in the same manner as Control Panel registration. Current scan probe owners with a 'licensed' software set will need to submit a new license request for the scan probe after installing this version of the control panel. The Scan panel is fully unlocked for 30 days. Details about this are provided below.
- Registration submission panels have been changed slightly.
- The Jog panel 'Move to 0, 0, 0' shortcut key was changed from 'NumLock 5 Numeric Keypad' to '5 Numeric Keypad'
- The Control Panel can check to see if new Control Panel software is available.

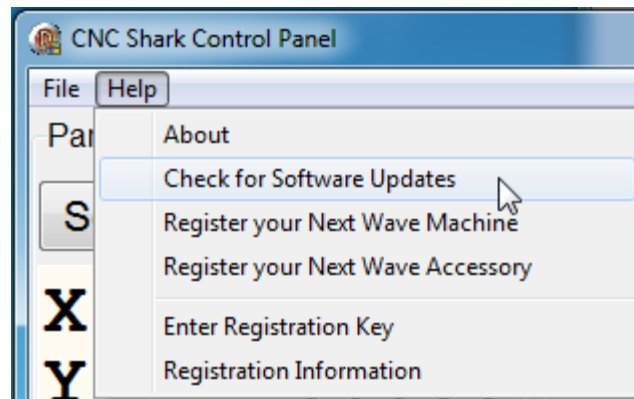
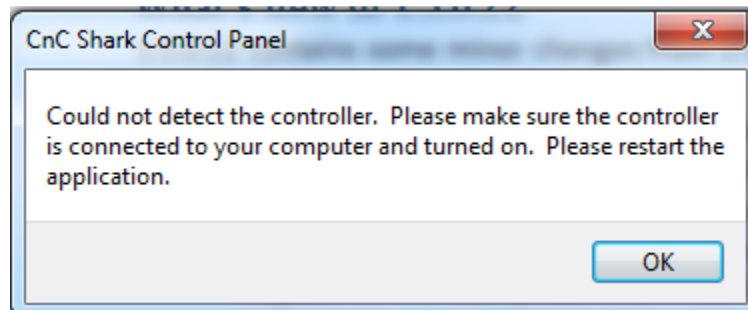


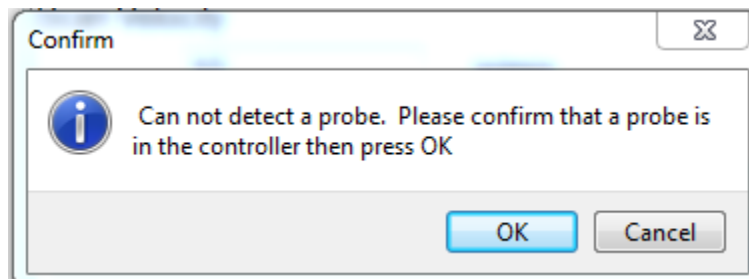
Figure 1 - Check for Software Updates

- The Control Panel has been ruggedized to guard against inadvertent key strokes while a job is running or paused. The Jog and Scan panels are not available once the 'Run File' button is pressed, until the job is completed or E-Stop'd.
- Users who registered the Shark Control Panel under 1.5.0.21 will not have to resubmit a registration request. After installing 1.5.0.22, the 'About' screen will indicate that the software is registered (if it was registered previously). Registration information can also now be viewed using the Registration Information tool.
- The Shark Control Panel will inform you if the Shark Control Box is not connected and powered on when you start the Shark Control Panel, and exit. The Shark Control Box must be connected and powered on to open the Shark Control Panel.



**Figure 2 - Shark Control Box Not Connected or Powered On Message**

- Two new safety and success of use measures have been added to the scan probe process.
  - A check is performed to ensure the Shark Scan Probe is plugged into the Shark Control Box when you Start the scan job. If the Scan Probe is not plugged in, an information box will appear informing you of the status. You can plug in the Scan Probe and select 'OK' - you will then be prompted to enter a scan file name (as you are in the previous versions of the Control Panel software). You can also choose to select 'Cancel' – this will result in exiting the job and you can return to it when you are ready.



**Figure 3 - Cannot Detect Probe Message**

- After selecting Start Scan, you enter the name of the file the scan will generate (no change). After hitting 'OK' to complete entering the file name, the Shark Control Panel will prompt you to touch the scan probe. This touch will send a signal to the Shark Control box and after a 1 second delay, the scan job will start. If the job does not start after lightly touching the probe, you should check to ensure the scan probe cable is plugged into the Shark Control Box and try again. You can also choose to cancel the scan at this point. This function was added to the scan job process to ensure that the scan probe is functioning immediately before the scan job starts. There have been instances where the environmental conditions were such that the scan probe would not function properly, and damaged the Scan Probe accessory as a result. While this function seems redundant to the one above, the combination of the two steps significantly reduces the opportunity for setup error to result in hardware damage.





- |                           |                               |
|---------------------------|-------------------------------|
| ▪ Arrow Down              | Y-                            |
| ▪ Right Arrow             | X+                            |
| ▪ Left Arrow              | X-                            |
| ▪ '+' Numeric Keypad      | Increases the Step Increment  |
| ▪ '-' Numeric Keypad      | Decreases the Step Increment  |
| ▪ Home Key Numeric Keypad | Moves up the jog speed list   |
| ▪ End Key Numeric Keypad  | Moves down the jog speed list |
| ▪ 5 Numeric Keypad        | Move to 0, 0, 0               |
- A number of improvements made 'under the hood' to provide better Shark performance across all models.
  - Added support for the Shark Pro Plus HD.
  - A single version of the software for Shark Touch Probe owners – you now have a single Shark Control Panel software package to use for both carving and scanning.
  - XP and Vista users no longer need to install Microsoft .NET 3.5.

### CNC Shark Control Panel Registration

Registering the software is a new feature of the CNC Shark Control Panel and Next Wave Automation's commitment to improving the product and support. The software is fully functional for up to 30 days after installation while registration is pending. This registration process will also be used to enable users quick access to future accessories offered.

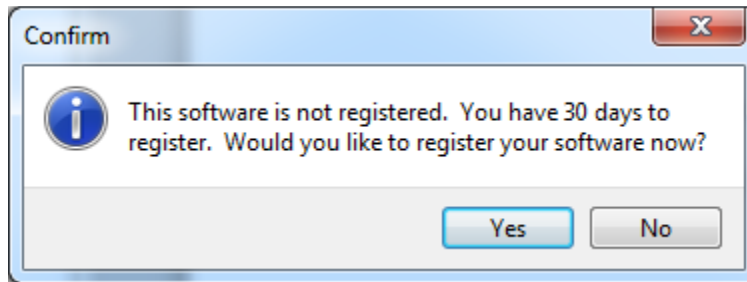
There are 3 ways you can register –

- If the computer that is connected to the Shark Control Box via the usb cable is in a network (has access to the internet), you can submit the form from the Control Panel.
- If the computer that is connected to the Shark Control Box via the usb cable is in a network (has access to the internet), you can immediately submit the form from the Control Panel using your default email application
- You can complete the registration form and then save a file to disk, and email the file to [registration@nextwaveautomation.com](mailto:registration@nextwaveautomation.com).

In all cases, you will receive an email, at the address you entered while registering, with a Shark Control Panel registration code. That registration code can be used with on any computer/Shark Control Panel system that is connected to the Shark Control Box at the time the registration form was completed and submitted.

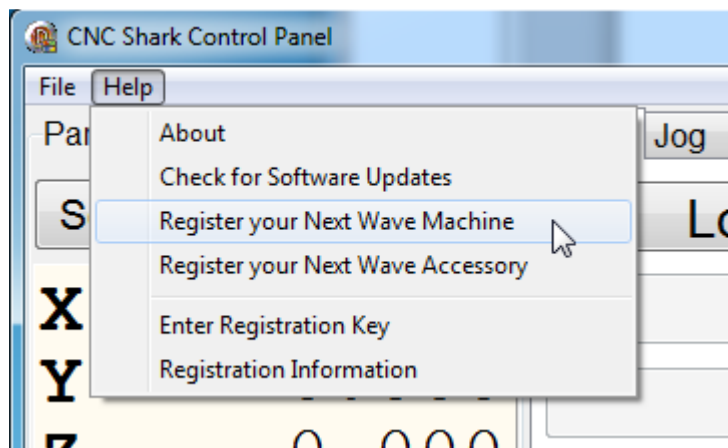
There are 2 ways you can open the Registration wizard to register the Shark Control Panel software.

When you start the Shark Control Panel, and it is not registered, a message will appear asking you if you want to Register the Shark Control Panel. Select 'Yes' to open the Registration wizard.



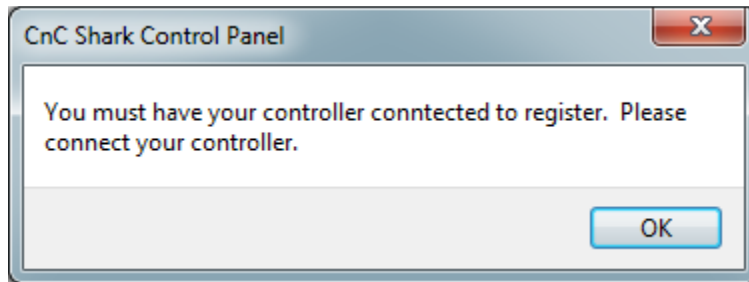
**Figure 5 - Control Panel Registration Notice at Start Up**

You can also open the Registration wizard from the Shark Control Panel. With the Shark Control Panel open, the Shark Control Box turned on, and a good connection established between the Shark Control Panel and the Shark Control Box (indicated by the 'Please Load File' in the lower left corner of the Shark Control Panel) - click on 'Help'. Select 'Register your Next Wave Machine'.



**Figure 6 - Register your Next Wave Machine Tool**

If the computer is not connected to the Shark Control Box and/or the Shark Control Box does not have power, you will see the message below.



**Figure 7 - Not Connected to the Control Box**

You must connect the Shark Control Box and turn it on. Then repeat the process to open the Registration wizard.



This will open the CNC Shark Product Registration panel. Select the Shark product you want to register.



Figure 8 - Shark Product Registration Selection



When you select 'Next', the Company name and email information panel will open. You must fill in all of the items with a red asterisk. If you don't, when you hit 'Next', an error message will appear prompting you to complete the form and try again. Also note that at this point the panel title bar is indicating the model of the Shark machine you selected to register. Be sure to use the email address that you want to receive the registration key.

A screenshot of a registration wizard dialog box. The title bar reads "You are registering your CnC Shark Pro Plus 25x25x5". The main content area contains the instruction "Please enter your company name and email information." followed by three input fields: "Company", "Email address", and "re enter Email address". The "Email address" and "re enter Email address" fields have a red asterisk to their right. Below the fields is a legend: "\* Required Field". At the bottom of the dialog are three buttons: "<-- Previous", "Next -->", and "Close".

Figure 9 - Registration Wizard Company Name and Email Address



When you select 'Next' the Owner and Location information panel opens. You must fill in all of the items with a red asterisk. If you don't, when you hit 'Next', an error message will appear prompting you to complete the form and try again.

A screenshot of a registration window titled "You are registering your CnC Shark Pro Plus 25x25x5". The window contains a form with the heading "Please tell us who you are and where you live." The form fields are: First Name (text input, required), Last Name (text input, required), Country (dropdown menu, required), Province (text input), Address (text input, required), Address 2 (text input), City (text input, required), State (text input, required), and Zipcode (text input, required). A legend below the fields indicates that a red asterisk (\*) denotes a "Required Field". At the bottom of the window, there are three buttons: "<-- Previous", "Next -->" (which is highlighted with a blue dashed border), and "Close".

Figure 10 - Registration Owner Name and Address Information



When you select 'Next' you are asked how you want to submit the registration.

- If the computer you are using is connected to the internet, and you want to submit the Registration directly to the Next Wave Automation server, select 'Submit'.
- If the computer you are using is connected to the internet, and you want to email the Registration file, select 'Email Registration to Next Wave'. This will open up your default email application and create an email message. You can add any text you desire and hit 'Send'.
- If the computer you are working on is not connected to the internet, select the 'Save Registration Info to Local File'. This will open up a file save dialogue box. Save the file to a location you will remember. You'll then email that file to [register@nextwaveautomation.com](mailto:register@nextwaveautomation.com) as an attachment.



Figure 11 - Registration Submission



You will receive a registration key in the email. To enter this, click on 'Help', then 'Enter Registration Key'.

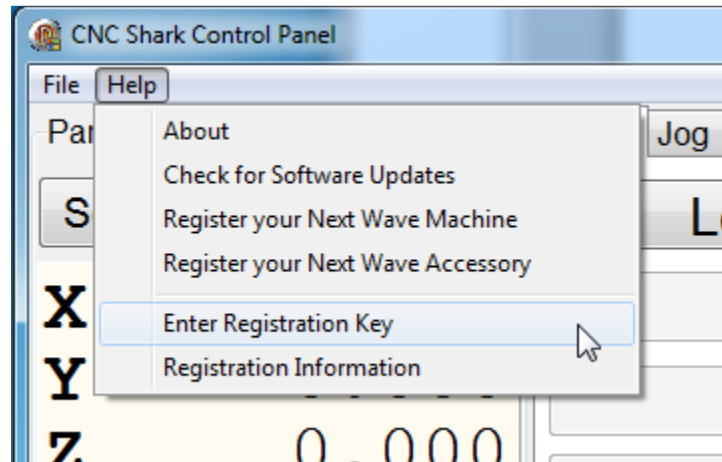


Figure 12 - Enter Registration Key Tool

This will open the Enter Registration Key panel. Enter in the Registration Key you received in the email, and click on the 'Set' button.

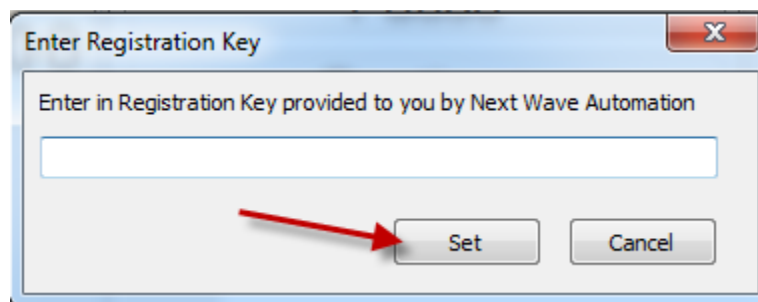


Figure 13 - Enter Registration Key Panel

Your software is now registered for use with your Shark Control Box. This same mechanism is used to register Shark accessories.



You can check to see if the Shark Control Panel is registered in 2 ways.

You can select Help, About – resulting in the display of the About screen. The panel will indicate if the software is registered or not.



Figure 14 - Shark Control Panel About Screen - Software Not Registered

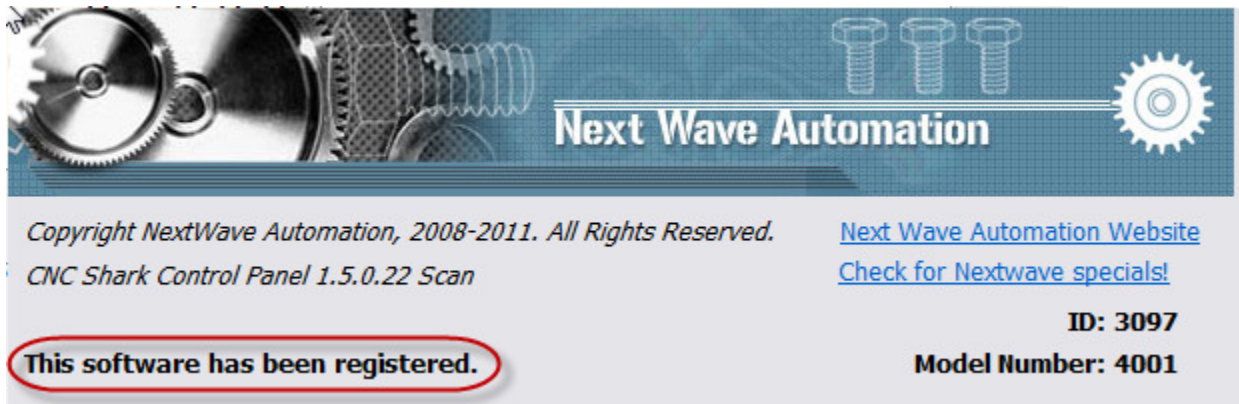


Figure 15 - Shark Control Panel About Screen - Software is Registered



You can also go to Help, and select 'Registration Information'.

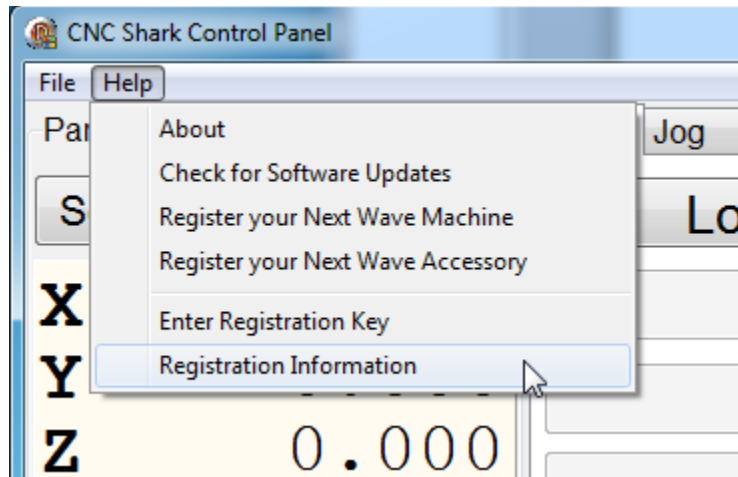
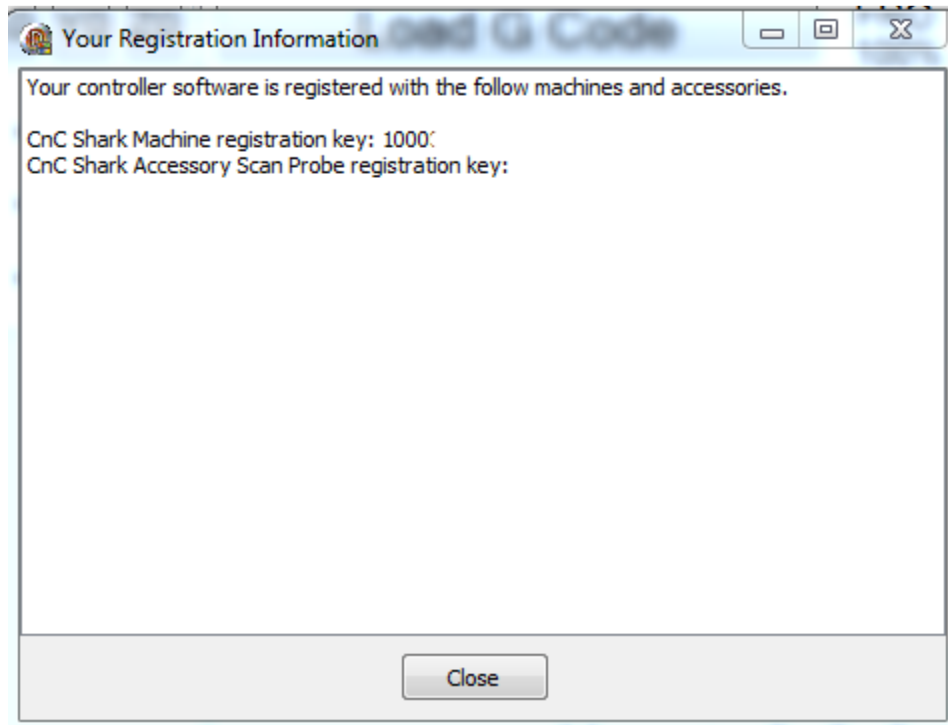


Figure 16 - Registration Information Tool



This will open the Registration Information panel. This displays all registration codes that you have entered.



**Figure 17 - Registration Information Panel**

You may want to perform an initial lubrication of the Shark at this point. See the Maintenance section of this manual for recommendations on how to perform this task.

This also completes the systems check of your new CNC Shark setup – congratulations!

### **CNC Shark Accessory Registration**

Registering the Shark Accessories is a new feature of the CNC Shark Control Panel and Next Wave Automation's commitment to improving the product and support. The software is fully functional for up to 30 days after installation while registration is pending. This registration process will also be used to enable users quick access to future accessories offered.

There are 3 ways you can register –

- If the computer that is connected to the Shark Control Box via the usb cable is in a network (has access to the internet), you can submit the form from the Control Panel.



- If the computer that is connected to the Shark Control Box via the usb cable is in a network (has access to the internet), you can immediately submit the form from the Control Panel using your default email application
- You can complete the registration form and then save a file to disk, and email the file to [registration@nextwaveautomation.com](mailto:registration@nextwaveautomation.com).

In all cases, you will receive an email, at the address you entered while registering, with a Shark Control Panel registration code. That registration code can be used with on any computer/Shark Control Panel system that is connected to the Shark Control Box at the time the registration form was completed and submitted.

**Scan probes are now shipped with a serial number identified in the packaging. If you are a current owner of a scan probe, or a new owner and did not receive this information, send an email to [registration@nextwaveautomation.com](mailto:registration@nextwaveautomation.com) to obtain one. The Control Panel's Scan function is fully unlocked for 30 days.**

To register your Shark Accessory, open the Registration wizard from the Shark Control Panel. With the Shark Control Panel open, the Shark Control Box turned on, and a good connection established between the Shark Control Panel and the Shark Control Box (indicated by the 'Please Load File' in the lower left corner of the Shark Control Panel) - click on 'Help'. Select 'Register your Next Wave Accessory'.

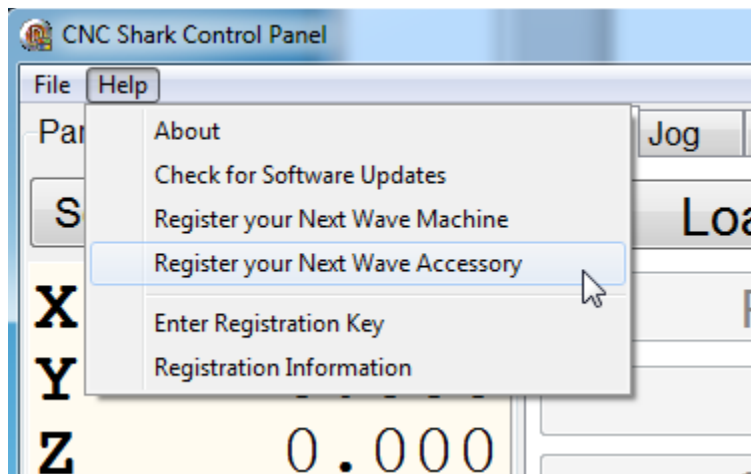


Figure 18 - Register your Next Wave Accessory Tool



If the computer is not connected to the Shark Control Box and/or the Shark Control Box does not have power, you will see the message below.

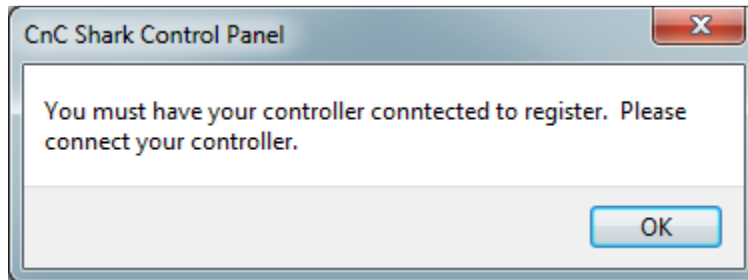


Figure 19 - Not Connected to the Control Box

You must connect the Shark Control Box and turn it on. Then repeat the process to open the Registration wizard.

This will open the CNC Shark Registration panel. Select the Shark product you want to register.



Figure 20 - Shark Accessory Registration Selection



When you select 'Next', the accessory serial number, company name and email information panel will open. You must fill in all of the items with a red asterisk. If you don't, when you hit 'Next', an error message will appear prompting you to complete the form and try again. Also note that at this point the panel title bar is indicating the Shark accessory you selected to register. Be sure to use the email address that you want to receive the registration key.

A screenshot of a Windows-style dialog box titled "You are registering your Next Wave Scan Probe". The dialog has a blue title bar with a close button (X) in the top right. The main content area has a white background and contains the following text and form elements:

- Please enter your company name and email information.**
- Serial Number  ? This is the serial number for your Scan Probe.
- Company
- Email address  \*
- re enter Email address  \*
- \* Required Field

At the bottom of the dialog, there are two buttons: "Next -->" and "Close". A mouse cursor is visible over the "Next -->" button.

Figure 21 - Registration Wizard Accessory Serial Number, Company Name and Email Address

If you enter a serial number that is not valid, a message box will open indicating an incorrect entry. Select 'OK' and re-enter the serial number.

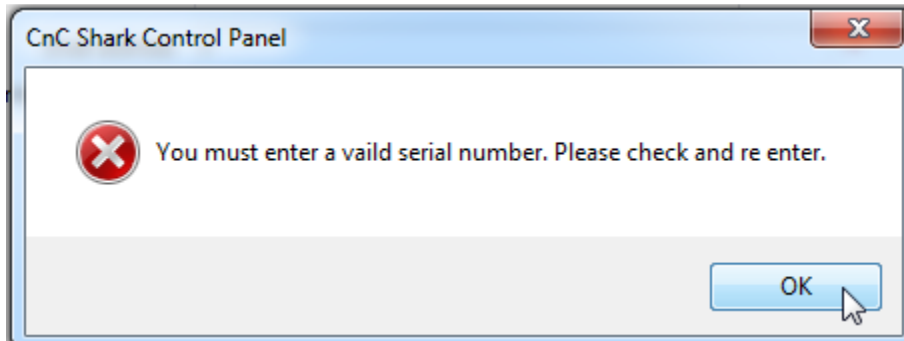


Figure 22 - Invalid Serial Number Entered Message

When you select 'Next' the Owner and Location information panel opens. You must fill in all of the items with a red asterisk. If you don't, when you hit 'Next', an error message will appear prompting you to complete the form and try again.

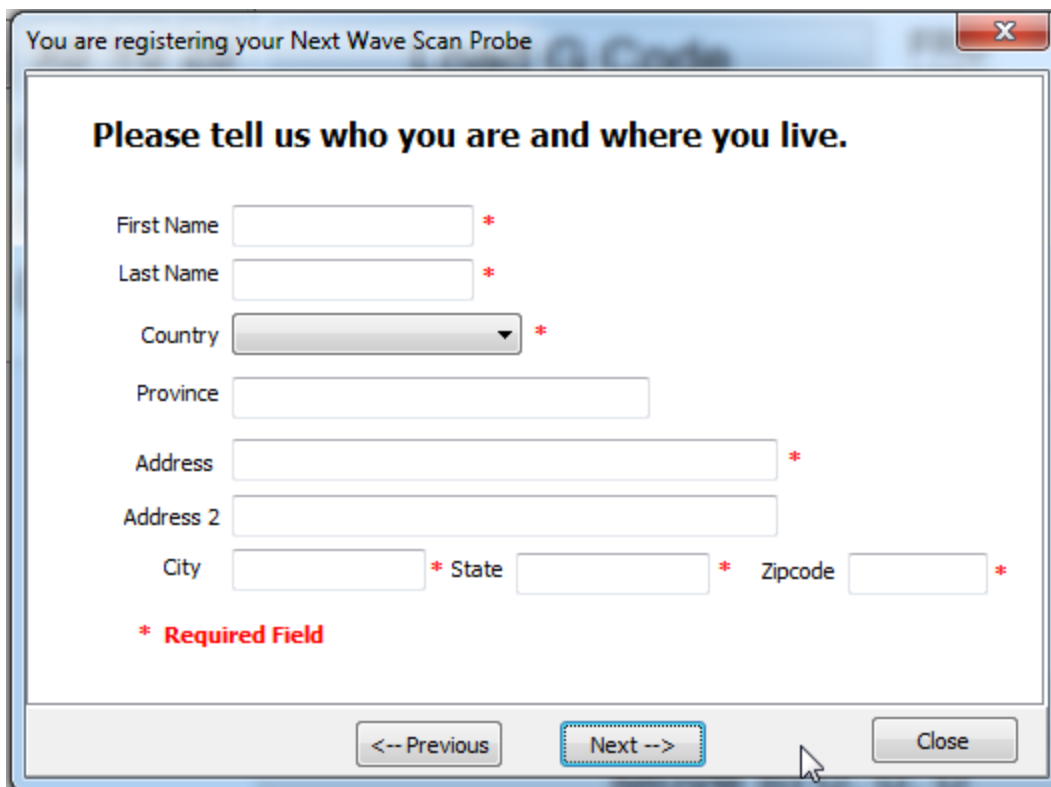


Figure 23 - Registration Owner Name and Address Information



When you select 'Next' you are asked how you want to submit the registration.

- If the computer you are using is connected to the internet, and you want to submit the Registration directly to the Next Wave Automation server, select 'Submit'.
- If the computer you are using is connected to the internet, and you want to email the Registration file, select 'Email Registration to Next Wave'. This will open up your default email application and create an email message. You can add any text you desire and hit 'Send'.
- If the computer you are working on is not connected to the internet, select the 'Save Registration Info to Local File'. This will open up a file save dialogue box. Save the file to a location you will remember. You'll then email that file to [register@nextwaveautomation.com](mailto:register@nextwaveautomation.com) as an attachment.

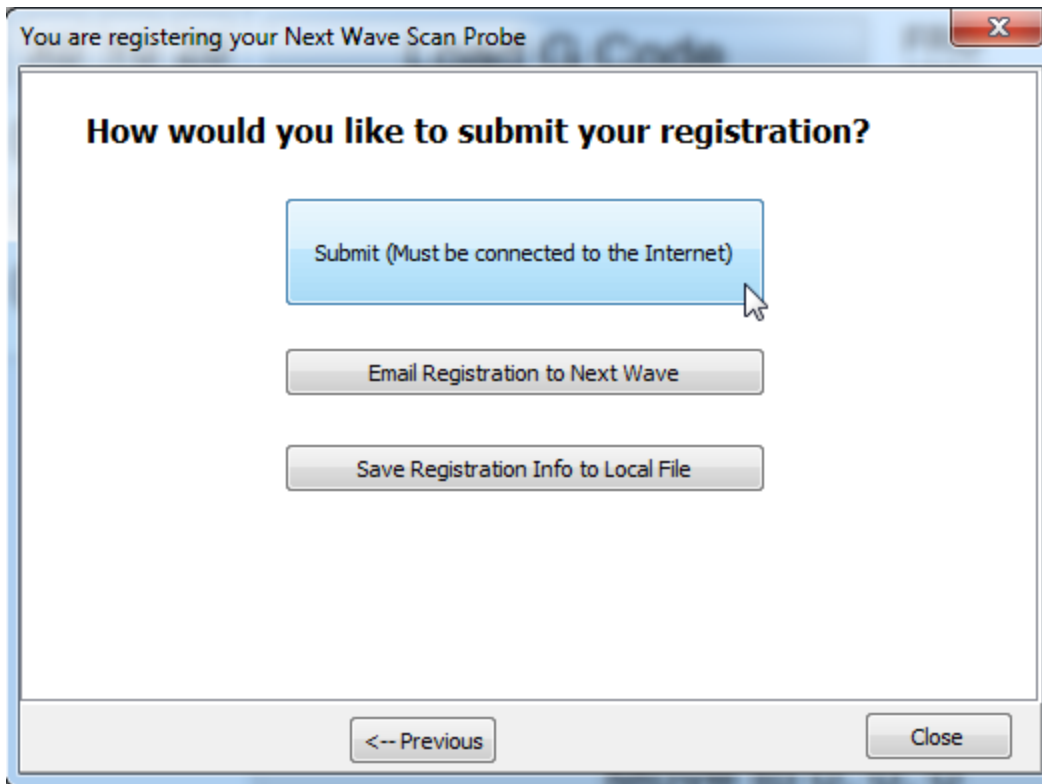


Figure 24 - Registration Submission



You will receive a registration key in the email. To enter this, click on 'Help', then 'Enter Registration Key'.

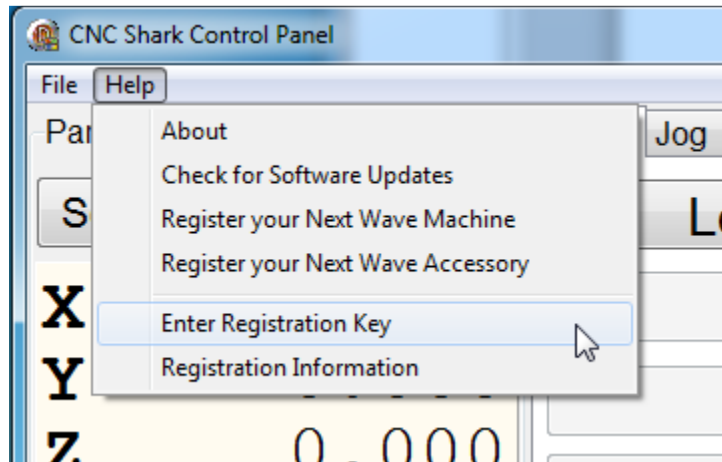


Figure 25 - Enter Registration Key Tool

This will open the Enter Registration Key panel. Enter in the Registration Key you received in the email, and click on the 'Set' button.

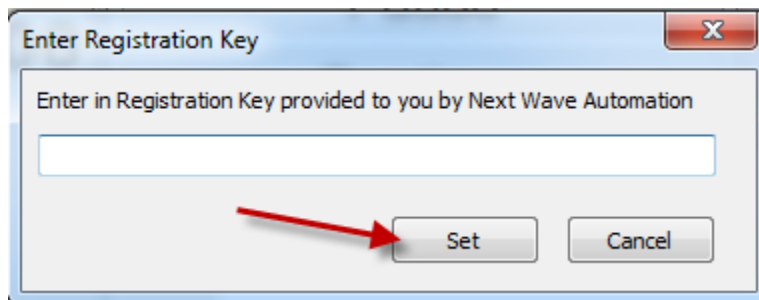


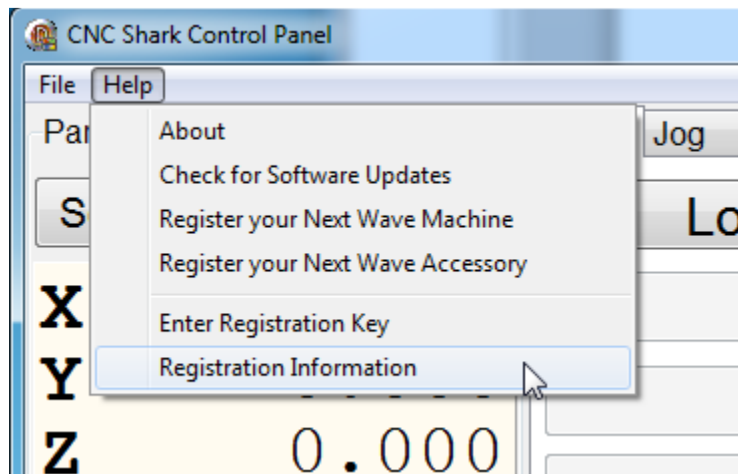
Figure 26 - Enter Registration Key Panel



**You must submit a registration request for your Shark machine and each accessory. For example, if you want to register the Shark Control Panel and the Shark Scan Probe, you would perform the registration process twice, selecting 'Register your Next Wave Machine' for one, and 'Register your Next Wave Accessory' for the second submission. In this case, you would receive 2 separate registration numbers to enter and thus complete the registration/licensing process. As new features are added, you would submit a registration for the new feature purchased, receive the registration code via email, and enter that registration code to complete registration of the feature.**

Remember that the email address you submit will be the one where the registration code is sent.

You can check to see that the registration code is 'set' by going to Help, and select 'Registration Information'.



**Figure 27 - Registration Information Tool**



This will open the Registration Information panel. This displays all registration codes that you have entered.

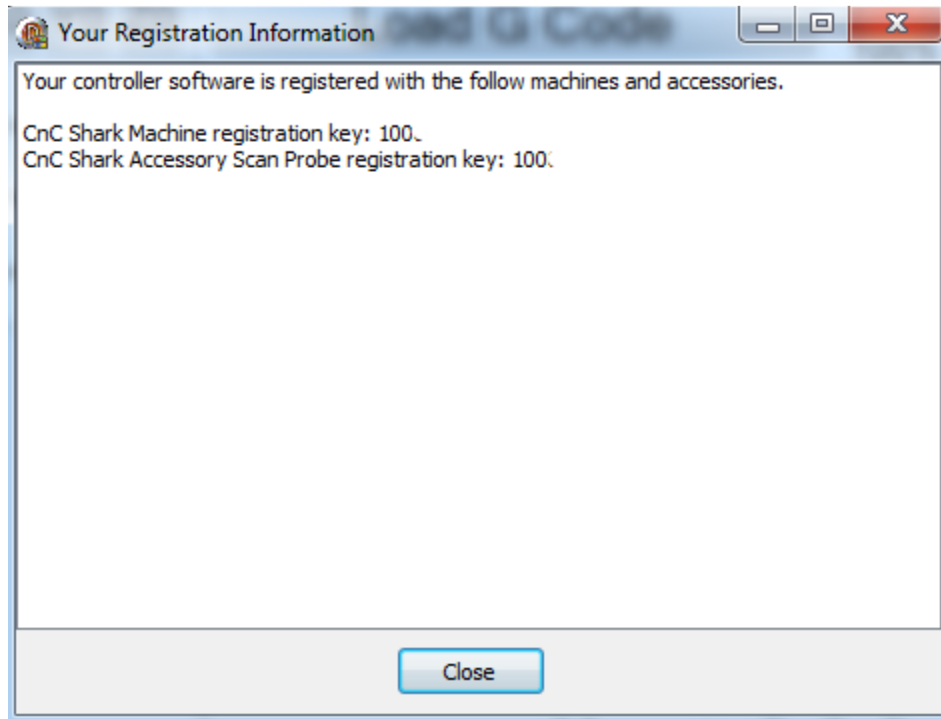


Figure 28 - Registration Information Panel Machine and Scan Probe Accessory Registered