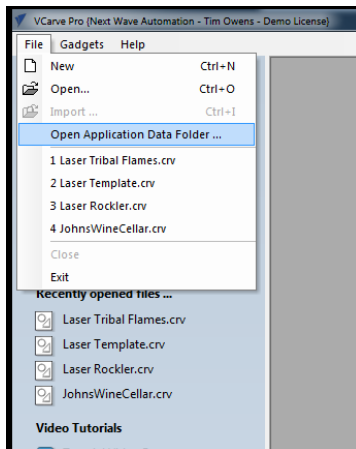


INSTALLING VCARVE POST PROCESSORS

FOR PIRANHA

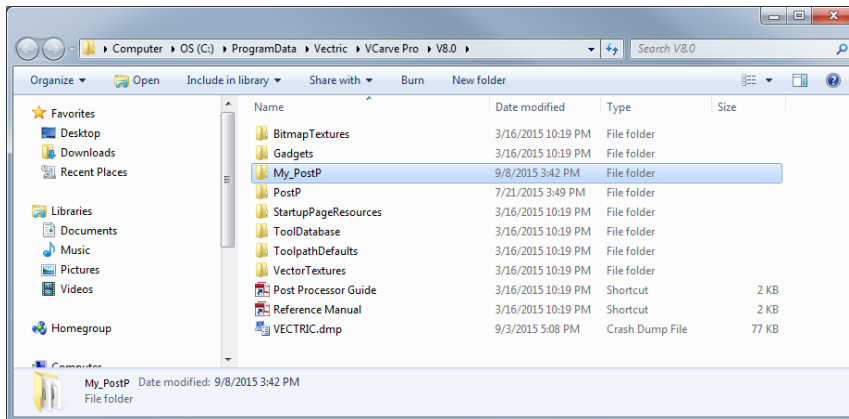
This assumes you have already installed Vcarve Version 8 or later

Got the File menu and “**Click Application Data Folder...**”



This will open the Explorer window in the correct folder.

Locate the “**My_PostP**” folder and place the Piranha post processors.



Close and Reopen Vcarve and it will have installed the new post processors.